

早稲田大学



WASEDA University
早稲田大学



Graduate School of Information, Production and Systems

UNIVERSITY HISTORY TIMELINE



1882



Established in Tokyo
By Shigenobu Okuma

Tokyo Senmon Gakko



Co-founders for Communist Party of China Mr. CHEN, Duxiu & Mr. LI, Dazhao



1884
Started
accepting
International
students



1908
Faculty of Science and Engineering
was established

Started off with 80 Students

3 departments

- Political Science & Economics
- Law
- Science



1900

Started sending Japanese students
to overseas

First accepting country was Germany



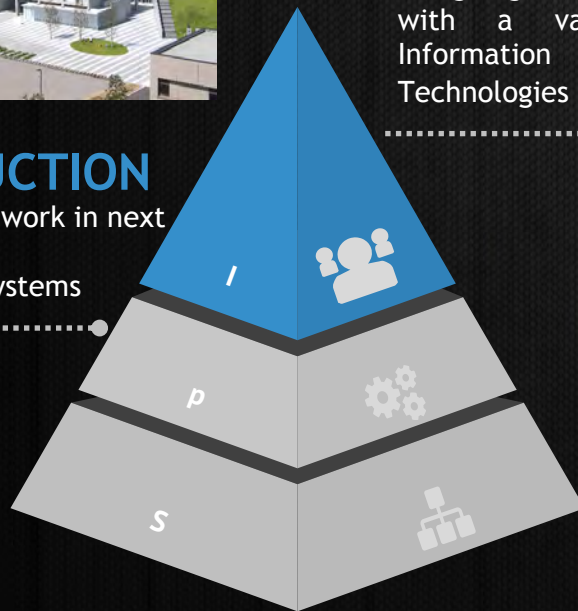


INFORMATION

Designing the future
with a variety of
Information
Technologies

PRODUCTION

Putting IT to work in next
Generation
production systems



INTEGRATED SYSTEMS

Development of System LSI, the
mainstay of tomorrow's industry

1982
100th Anniversary



**Graduate School of Information,
Production and Systems (IPS)** was
established in Kitakyushu-city,
Fukuoka-prefecture.

2003

2012

130th Anniversary celebrated

present



Kitakyushu Science and Research Park (City of Kitakyushu)

Waseda University
Student Dormitory

Waseda University
Student Dormitory

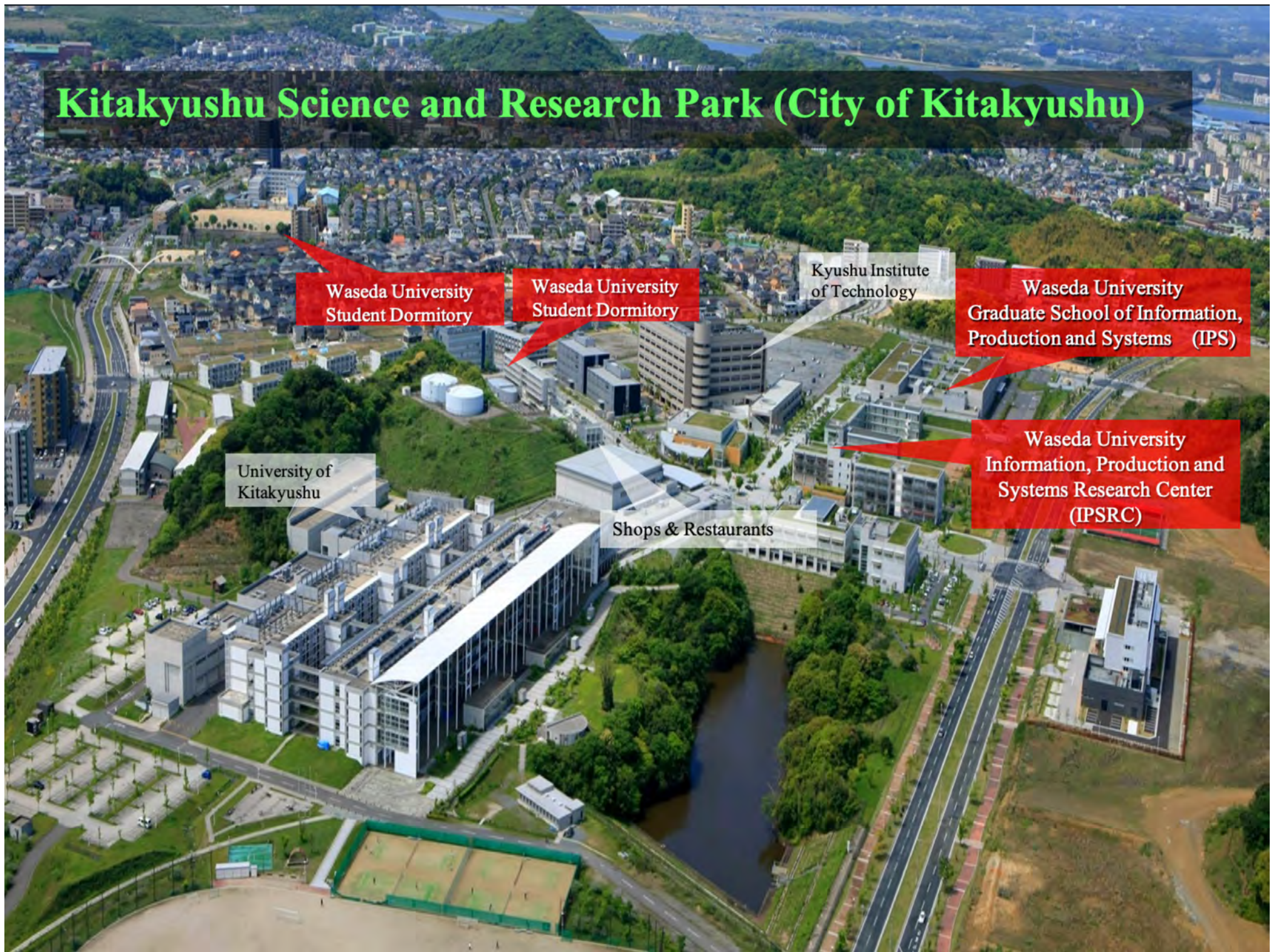
Kyushu Institute
of Technology

Waseda University
Graduate School of Information,
Production and Systems (IPS)

University of
Kitakyushu

Shops & Restaurants

Waseda University
Information, Production and
Systems Research Center
(IPSRC)





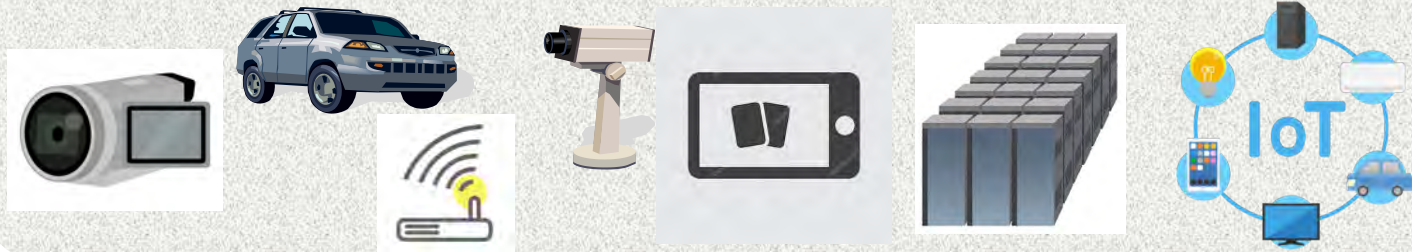
Mission: Integrated Systems Field

Applications

Video system Mobile system Communication system Security system Entertainment system AI/Cloud system IoT

Integrated Systems

Creating innovative products or industries for future information society through integration of various leading-edge technologies into a system

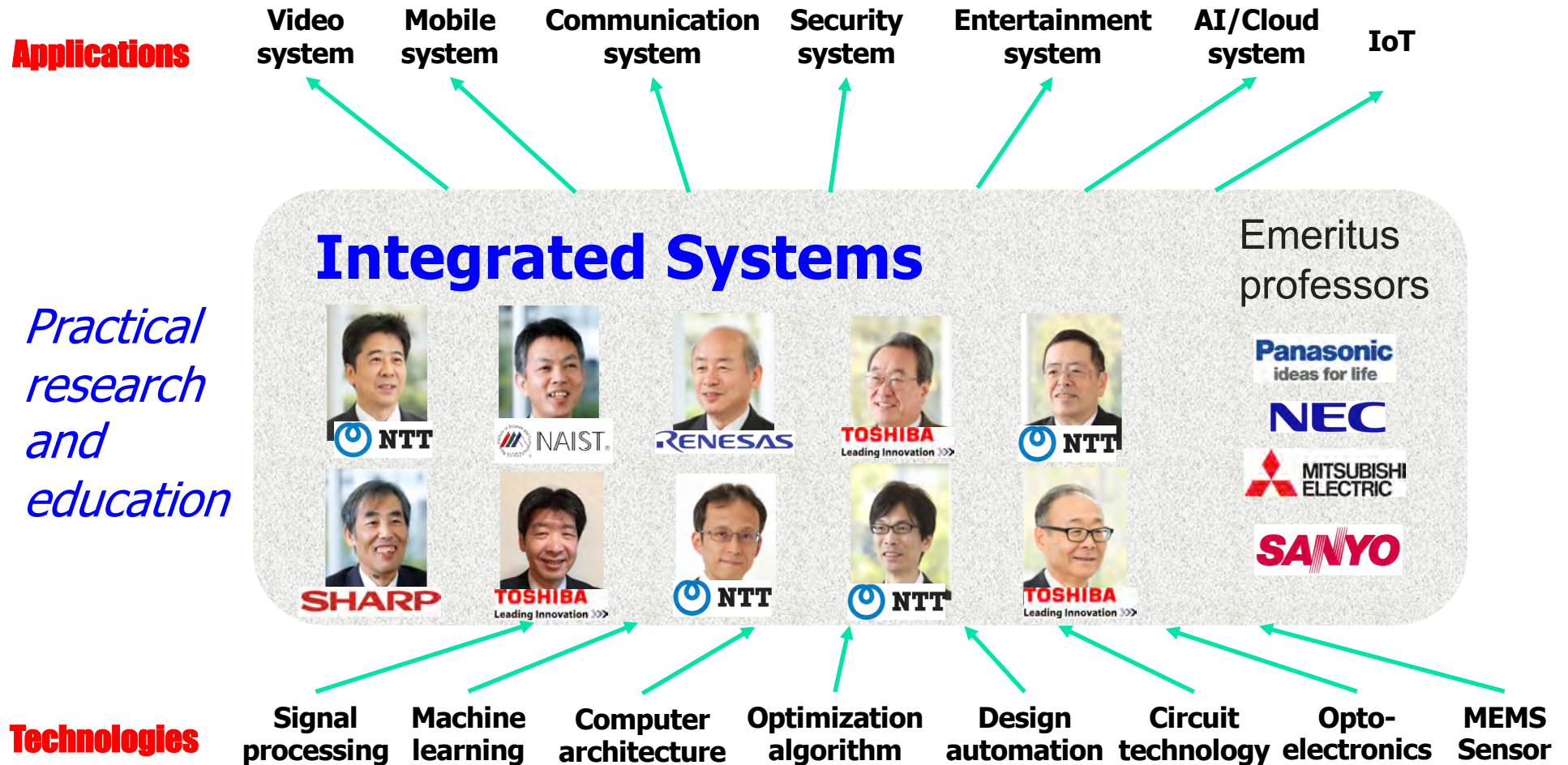


Technologies

Signal processing Machine learning Computer architecture Optimization algorithm Design automation Circuit technology Opto-electronics MEMS Sensor

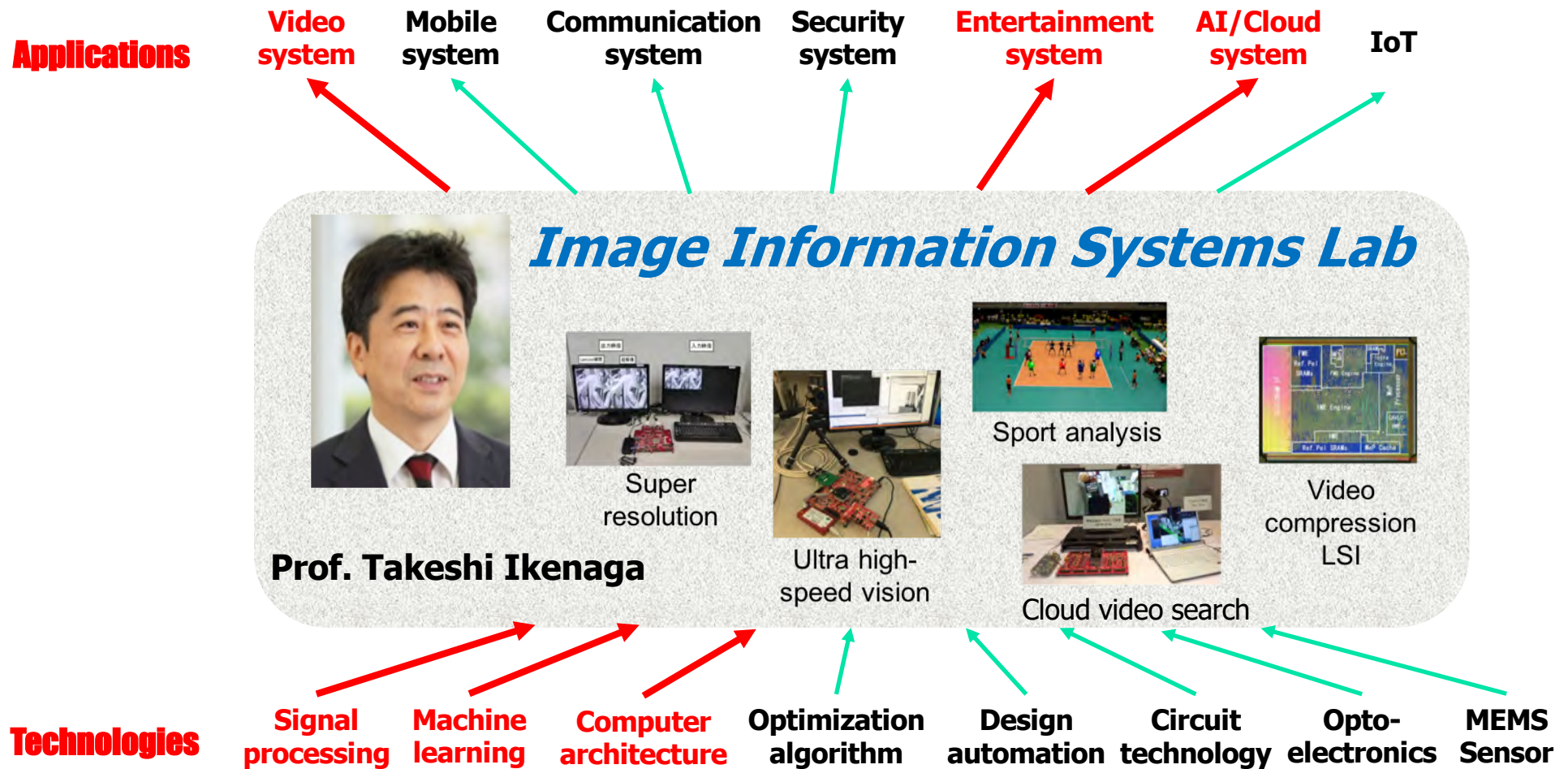


Faculty: Integrated Systems Field





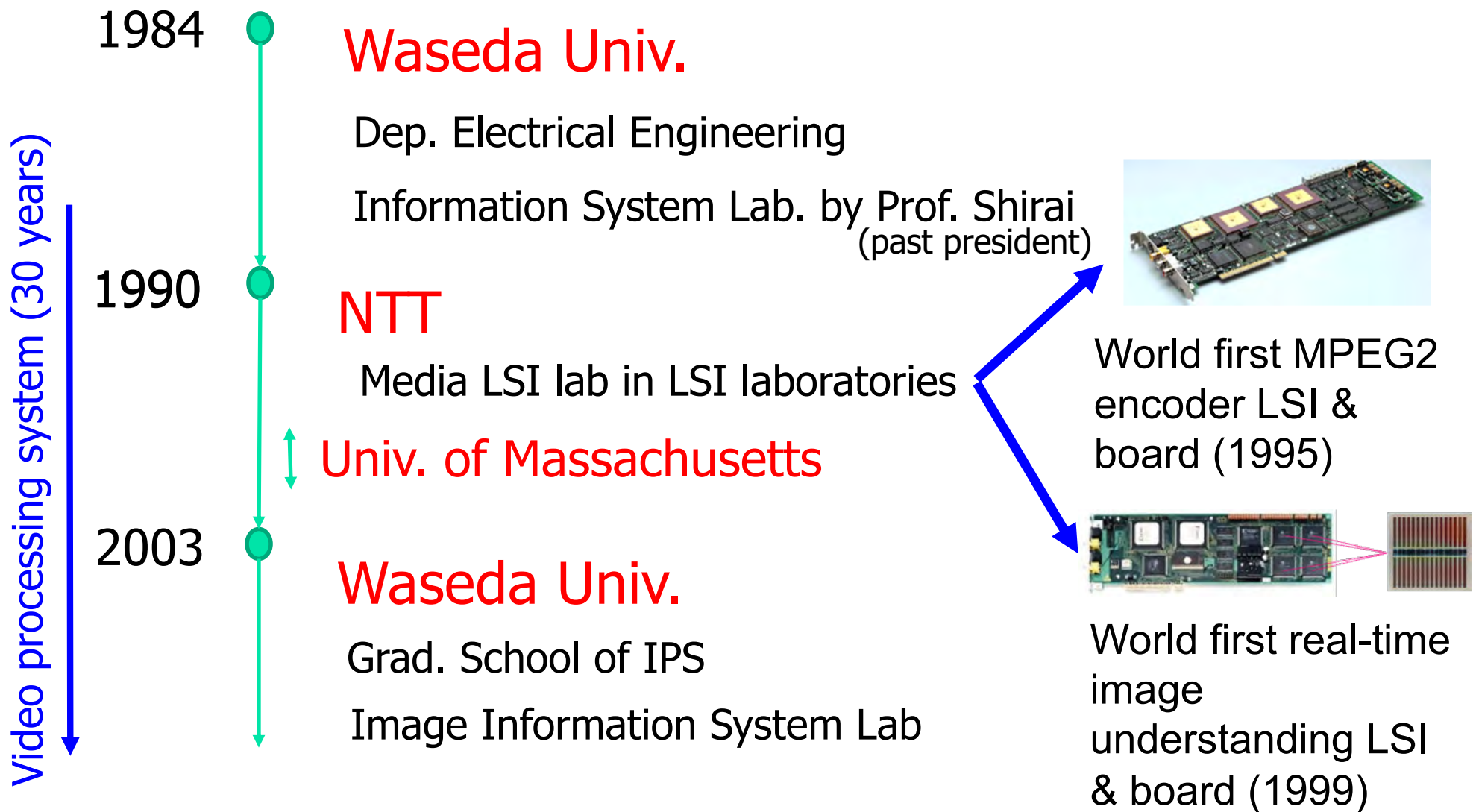
Ikenaga laboratory



<http://www.f.waseda.jp/ikenaga/>



Biography: Takeshi Ikenaga



112 journals, 254 reviewed international conference papers and 210 others
2706 citations and 26 h-index at Google Scholar (as of Feb. 2021)



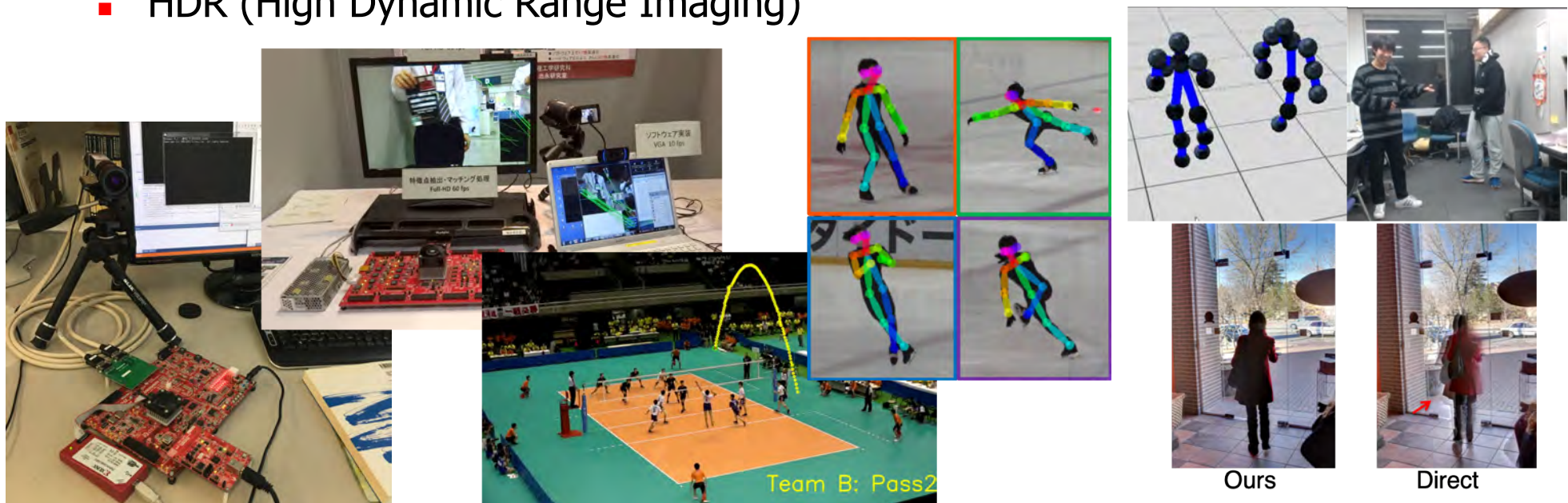
Current principal research topics

■ Video recognition system

- Sport analysis algorithm and real-time system for game tactics and TV contents
- High speed (1000fps), Low delay (1ms) vision system for robust object detection, tracking and classification
- 3D human pose estimation based on CNN

■ Video processing system

- Video compression algorithm and system design for next generation standard
- HDR (High Dynamic Range Imaging)



Poster: <http://www.waseda.jp/sem-ikenaga/content/member/member-E.htm>



Ikenaga laboratory members 2016





Lab member in 2019





Current members





Various lab activities



Lab tour & party



Company visiting



Presentation in conferences



International exchange



Graduation ceremony



Lab graduates



南京



深圳



西安



福岡



北京



上海



東京



Career after graduation

Japanese companies



International/Chinese companies



Universities





Message for new applicants

Welcome every students who show interests in real technologies, products and industries related to image / video processing systems!

Welcome every students who show interests in Waseda university and Japanese culture!

If you are interested in, feel free to send an e-mail to ikenaga@waseda.jp .